

INSTALLATION INFORMATION

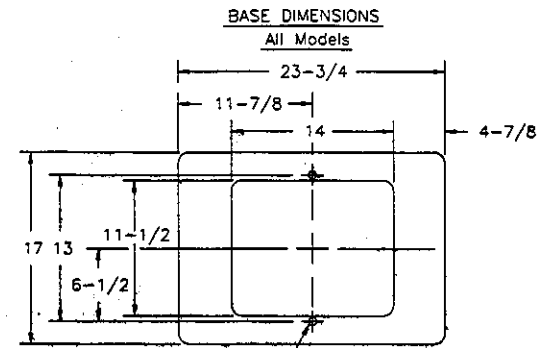
GO PUMP

CAUTION: Dispensers must be installed with a suitable power-operated pump incorporating a provision for expansion relief which will relieve at pressures not to exceed 50 lbs. per sq. inch. Do not use line check valve between dispenser and power-operated pump unless provided with relief valve. (Remote dispensers only.)

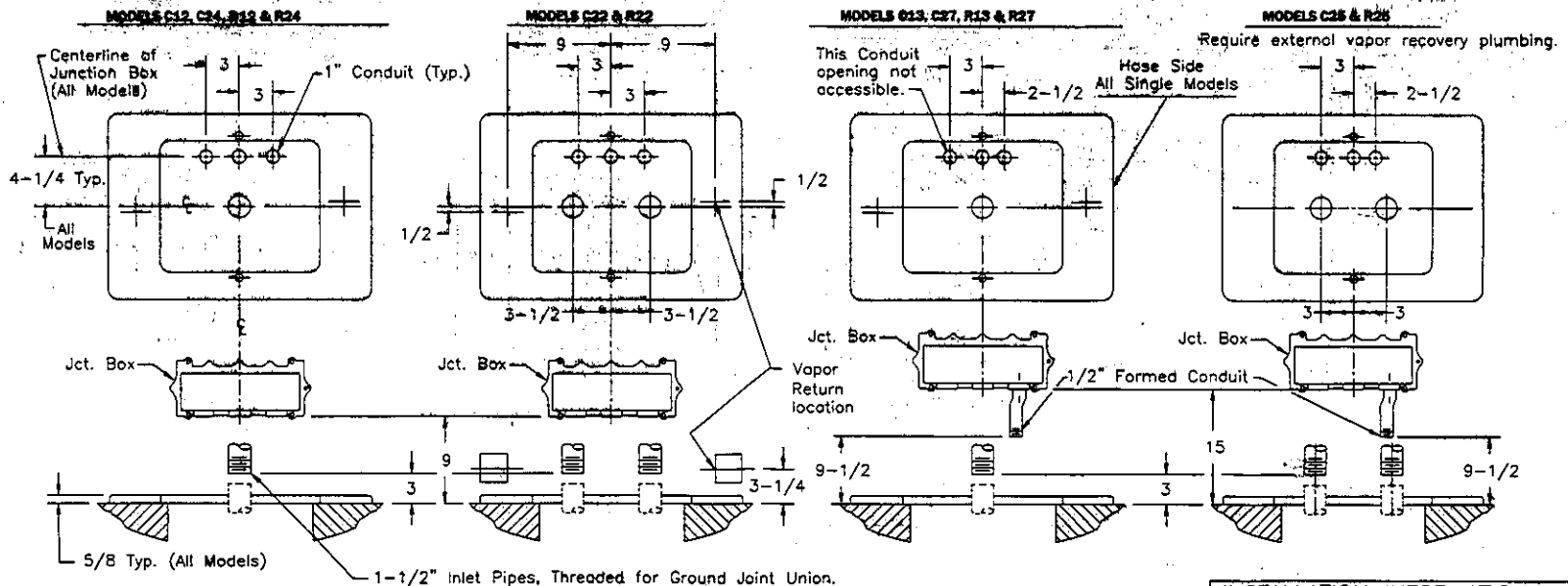
All threaded pipe joints of liquid handling piping must be assembled with Underwriters listed gasoline resistant pipe joint sealing compound. Apply on male threads only.

Note: Installation to conform to National, State, & Local Codes.

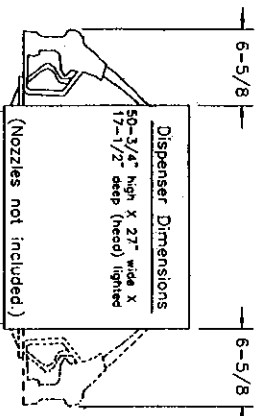
Note: Impact Safety Valves are to be installed with shear section in line with surface of island within + or - 3/4 inch. Depending on valve to be used, a longer or shorter inlet nipple may be required.



Customer to provide conduit and fittings to junction box and supply inlet knock off valves if required.



INSTALLATION INFORMATION		
GO PUMP		
BENNETT®	P-0028	1
Spring Lake Michigan, 49456	REV. A 1669B	SHEET



INSTALLATION INFORMATION

GO PUMP

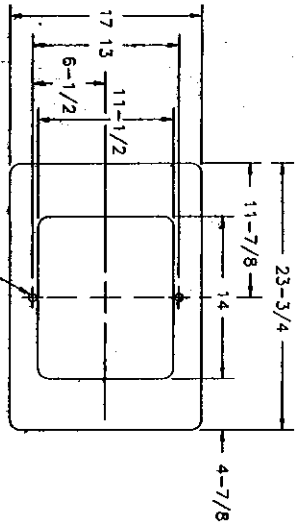
CAUTION: Dispensers must be installed with a suitable power-operated pump, incorporating a provision for expansion relief which will relieve at pressures not to exceed 50 lbs. per sq. inch. Do not use line check valve between dispenser and power-operated pump unless provided with relief valve. (Remote dispensers only.)

All threaded pipe joints of liquid handling piping must be assembled with Underwriters listed gasoline resistant pipe joint sealing compound. Apply on male threads only.

Note: Installation to conform to National, State, & Local Codes.

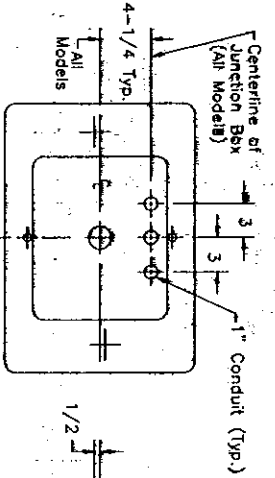
Note: Impact Safety Valves are to be installed with shear section in line with surface of island within $\pm 3/4$ inch. Depending on valve to be used, a longer or shorter inlet nipple may be required.

BASE DIMENSIONS

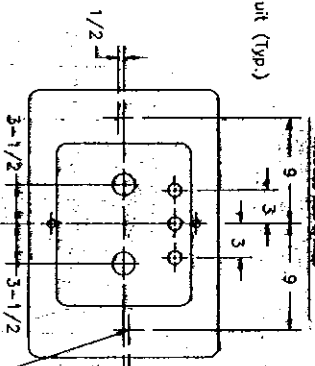


Customer to provide conduit and fittings to junction box and supply inlet knock off valves if required.

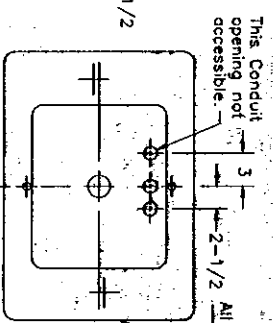
MODELS C22, C24, R23 & R24



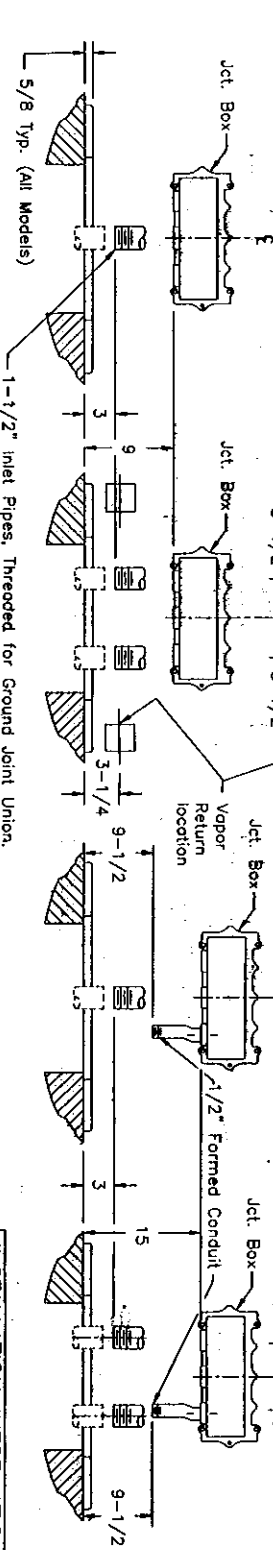
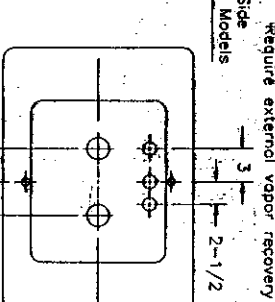
MODELS C22 & R22



MODELS C23, C27, R23 & R27



MODELS C25 & R25



DRAWN B.L.B. DATE 12/9/99 MANUAL NO. 703893
 PRESSURE SENSITIVE BACKED WITH CLEAR COAT PART NO.

INSTALLATION INFORMATION	
GO PUMP	
BENNETT	P-0028
Spring Lake Michigan, 49456	REV. A 1 6698
	SHEET 1