

# Bennett High Hose Commercial Fueling

Conventional wisdom asked the question: why on earth would you design a high hose cabinet for commercial fleet fueling?



After all it's *only* commercial fueling.

Who cares if the hose is difficult to use?

Who cares if vehicles run over the hose, crush it, and the flow rate drops to a dribble?

Who cares if the user is dragging around 15 pounds of hose, nozzle, and other fittings?

Who cares if the hose wears out prematurely?

Who cares if hose retractors require lots of maintenance?

Who cares if pole mounted retractors attached to the side creates an ugly cabinet?

Who cares?

We care.

We care about commercial fleet fueling. It's one of our most important business segments.

We want the hose to be easy to use. We want the hose life to be as long as possible. We want good flow rates for a long, long time. We want maintenance, including hanging hardware maintenance, to be as low as possible. We want commercial fleet fueling to be attractive and stylish.

We care about offering our commercial customers the most comprehensive line up of fleet fueling cabinets ever seen in our industry.

After all, it's *only* commercial fueling; why not make it great.

# Bennett High Hose Commercial Fueling

## Bennett High Hose Commercial Fleet Fueling Cabinets

**Rugged Construction.**

**Bennett world renowned hydraulic internals.**

**Suction pump or remote dispenser models.**

**One or two product inlets.**

**One, two, or four hoses.**

**Front or side mount nozzle boots.**

**Electronic or mechanical displays.**

**Certain models accept field retrofit kits that allow fleet controller (card lock) systems to mount in the electronic enclosure door.**

**Interfaces to all major fleet controller systems.**

**Conventional flow rate or truck stop speed models.**

**For truck stop speed models: masters and companion satellites or, master/satellite combined in the same cabinet. We can even provide a dual master / dual satellite in a single cabinet for high speed performance.**

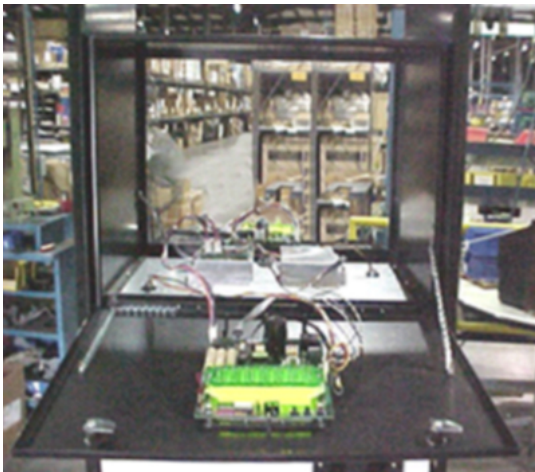
**Satellites are full sized high hose cabinets that match the appearance of the master dispenser.**

**Heavy Duty Metal Electronics Fold-Down Door.**

**Single Board Electronics Design for Ease of Service.**

**Options for colors and graphic logos.**

**Options for stainless steel exteriors.**



Dual Dispenser Electronics  
Simplicity in Action

### Simplicity in Action

It doesn't get any simpler than Bennett's streamlined hydraulic and electronic systems. The main display for each hose includes the display, CPU, power supply, electronic calibration feature, current loop interface, electromechanical totalizer, programming buttons, battery backup for last sale recall, and field wiring terminal strip. How hard is a problem to diagnose when there is only one critical circuit board per hose?

Our free CD-based, Home Study Service Training Course makes it easy for technicians to quickly learn to service our entire product line.

Many customers certify their own technical personnel and with the few parts required, can quickly make any needed repairs.

A factory rebuilt exchange program for common parts further lowers your long term cost of ownership.



Rev 3 June 07